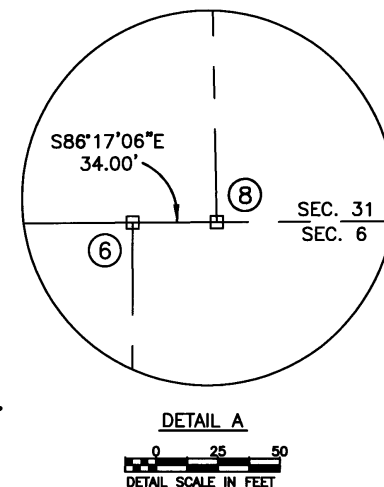


LONDON-GROVEPORT RD. (S.R. 317), CO. RD. #924  
SHOOK RD.  
TO ALUM CREEK DR.

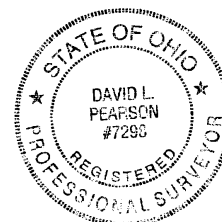
FRANKLIN COUNTY, OHIO  
HAMILTON & MADISON TOWNSHIPS  
CONGRESS LANDS (EAST OF THE SCIOTO)  
SEC. 1, T3N, R22W  
SEC. 6, T10N, R21W  
SEC. 31, T11N, R21W  
SEC. 36, T4N, R22W



SURVEY CONTROL POINTS			
NO.	DESCRIPTION	OFFSETS FROM	ID. NO.
1	FRA. COUNTY MON. ASSEM., A.P.	C/L	FCGS 9963
2	FRA. COUNTY MON. ASSEM., INT./A.P.	C/L	FCGS 9930
3	FRA. COUNTY MON. ASSEM., A.P.	C/L	FCGS 9927
4	FRA. COUNTY MON. ASSEM., A.P.	C/L	FCGS 9961
5	FRA. COUNTY MON. ASSEM., A.P.	C/L	FCGS 9929
6	FRA. COUNTY MON. ASSEM., INT./P.O.T.	C/L	FCGS 5938
7	FRA. COUNTY MON. ASSEM., P.I.	C/L	FCGS 5940
8	FRA. COUNTY MON. ASSEM., INT.	C/L	FCGS 2271

### LEGEND

△	ANGLE POINT / POINT OF INTERSECTION
□	MONUMENT BOX ASSEMBLY / CONC. MONUMENT
○	SURVEY POINT FOUND (RRS, IP, PK, ETC.)
●	SURVEY POINT SET (RRS, IP, PK, ETC.)
○	STONE
INT.	INTERSECTION
A.P.	ANGLE POINT
P.O.T.	POINT ON TANGENT
P.I.	POINT OF INTERSECTION
P.C.	POINT OF CURVATURE
P.T.	POINT OF TANGENCY
T.S.	TANGENT TO SPIRAL
S.C.	SPIRAL TO CURVE
C.S.	CURVE TO SPIRAL
S.T.	SPIRAL TO TANGENT
MON. ASSEM.	MONUMENT BOX ASSEMBLY
MON.	CONCRETE MONUMENT
R.	PROPERTY LINE
C/L	CENTERLINE
SEC.	SECTION LINE
VMS	VMS LINE
CO.	COUNTY LINE
TWP.	TOWNSHIP LINE



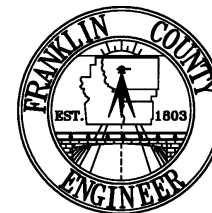
### BASIS OF BEARINGS:

BEARINGS ARE BASED ON THE OHIO STATE PLANE COORDINATE SYSTEM, SOUTH ZONE AND NORTH AMERICAN DATUM OF 1983, (NSRS 2007), AS ESTABLISHED FROM A GPS SURVEY PERFORMED BY THE FRANKLIN COUNTY ENGINEER'S SURVEY DEPARTMENT IN 2010. OCCUPYING MONUMENTS "FCGS 2080", "FCGS 9962".

THIS PLAT WAS PREPARED FROM AN ACTUAL FIELD SURVEY PERFORMED BY THE FRANKLIN COUNTY ENGINEER'S OFFICE, ALONG WITH PUBLIC RECORDS ON FILE IN THE FRANKLIN COUNTY RECORDER'S OFFICE AND THE FRANKLIN COUNTY ENGINEER'S OFFICE.

DAVID L. PEARSON  
OHIO REGISTERED SURVEYOR NO. 7298

01/25/2016  
DATE



DATE: 01-21-16		DRAWING: 0924-23	
		DRAWN BY: MJR	
	REVISIONS		
DATE	DESCRIPTION		BY